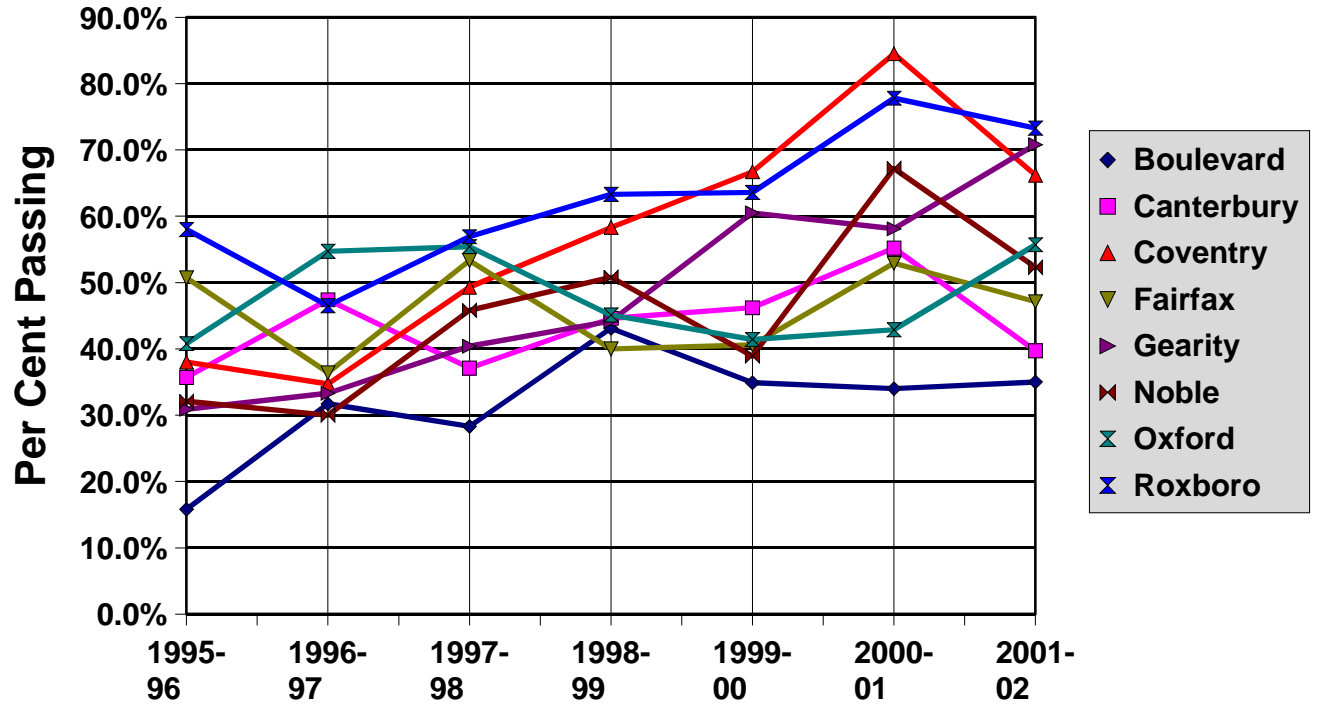


4th Grade Math



	1995-96	1996-97	1997-98	1998-99	1999-00	2000-01	2001-02
Boulevard	15.8%	31.7%	28.3%	43.1%	34.9%	34.0%	35.0%
Canterbury	35.7%	47.4%	37.1%	44.6%	46.2%	55.2%	39.7%
Coventry	38.0%	34.7%	49.3%	58.3%	66.7%	84.5%	66.2%
Fairfax	50.7%	36.4%	53.3%	40.0%	40.6%	52.9%	47.1%
Gearity	30.9%	33.3%	40.4%	44.2%	60.5%	58.1%	70.8%
Noble	32.1%	30.0%	45.8%	50.8%	38.9%	67.2%	52.3%
Oxford	40.8%	54.7%	55.4%	45.1%	41.4%	42.9%	55.7%
Roxboro	58.0%	46.5%	56.9%	63.3%	63.6%	77.8%	73.3%